



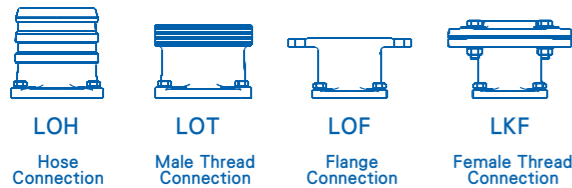
### FEATURE

- Designed for civil engineering, light weight for easy portability, double outer casing water cooling motor make it possible to run the pump to low water level.
- Complete stainless steel outer cover of AS 1.5HP ~ 10HP (1.1kW~7.5kW) models provides exceptional consolidated design, with light weight structure less than 175 lbs (80kg) and diameter of 11.2 inches (286mm) that provide miniature outlook.
- Specially designed high efficiency and water resistant HCR (high chrome) impeller.
- Multi-impeller design suitable for high head with small capacity and low head with large capacity application requirements. (H : high, N : normal, L : large)
- Compact, strong and easy handling for all civil engineering application conditions.

### APPLICATIONS

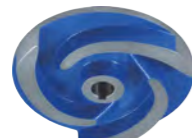
- Civil engineering, dewatering of tunneling and ground works, also for storm water sewers.
- Dewatering of fluids containing solid sediments.
- Ease of mobility for use by contractors, installers and service industries.

- Optional discharge connection(hose,flange and thread connection).



### HCR impeller

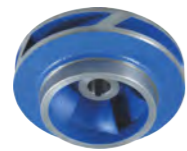
High chrome alloy (HCR) steel hardness of 55-60 RC. impeller to stand high abrasive applications.



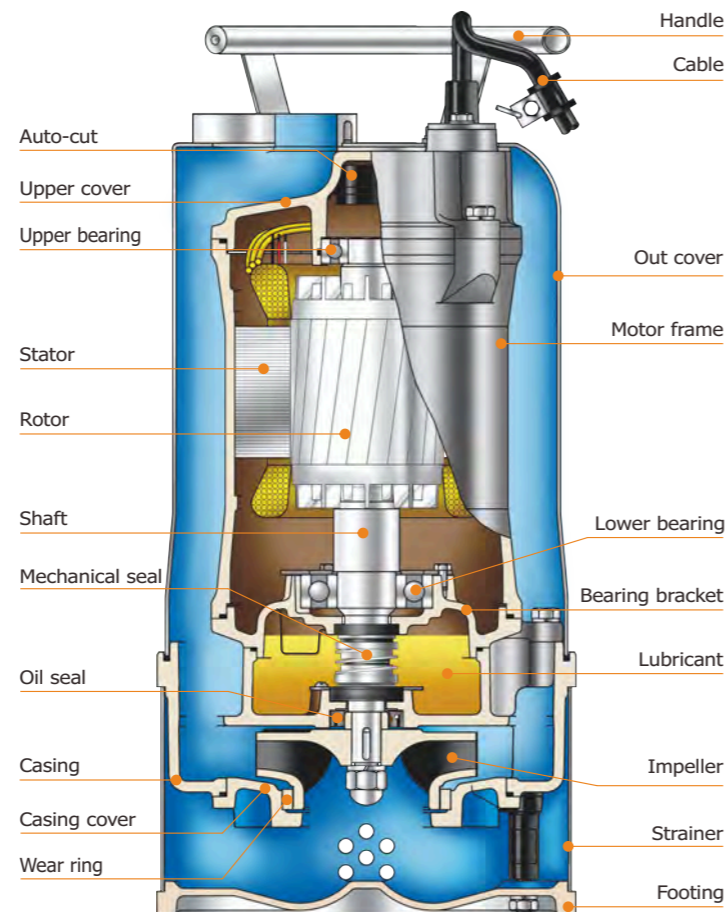
AS-215



H type impeller



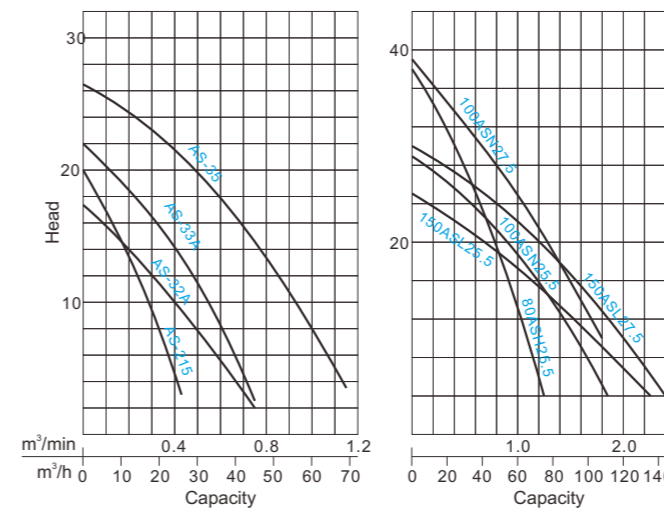
N/L type impeller



### PRODUCT NOMENCLATURE

AS	3	2	A	
Type	Discharge inch	HP	Style	
100	AS	N	2	5.5
Discharge mm	Type	Impeller type (H/N/L)	Pole	kW

### PERFORMANCE CURVES



### PERFORMANCE SPEC.

Model	Power HP(kW)	Discharge Inch(mm)	Phase	Start Method	Head m	Capacity		Weight kg 1 / 3	Solid Passage mm	Dimension (mm)		
						m³/min	m³/h			Length	Width	Height
AS-215	1.5(1.1)	2"(50)	1	Capacitor	13.5	0.2	12	28	8	-	210	496
												3
AS-32A	2(1.5)	3"(80)	1	Capacitor	10	0.4	24	43	11	252	235	616
												3
AS-33A	3(2.2)	3"(80)	1	Capacitor	14	0.4	24	46	11	252	235	616
												3
AS-35	5(3.7)	3"(80)	3	Direct	20	0.5	30	44	11	252	235	561
80ASH25.5	7.5(5.5)	3"(80)	3	Direct	28	0.5	30	72	10	-	286	661
100ASN25.5	7.5(5.5)	4"(100)	3	Direct	19	1.0	60	75	10	-	286	661
100ASN27.5	10(7.5)	4"(100)	3	Direct	25	1.0	60	75	10	-	286	661
150ASL25.5	7.5(5.5)	6"(150)	3	Direct	12	1.5	90	78	10	-	286	723
150ASL27.5	10(7.5)	6"(150)	3	Direct	17	1.5	90	81	10	-	286	723

Note : Weight W/O Cable

### SPECIFICATIONS

Item	Description	
Power	1.5~5HP(1.1~3.7kW)   7.5~10HP(5.5~7.5kW)	
Liquid temp.	0~40°C(32~104°F)	
Applications	Construction sites · Basins dewatering	
Max depth	30m	
Pump sect.	Impeller	Semi-open   Semi-open   Enclosed channel
	M. seal	Double M. seals
	Bearing	Ball type
	Out cover	SUS304
	Upper cover	FC-200
	Casing	FC-200
Motor sect.	Impeller	HCR
	M. seal	Lower:SiC/SiC · Upper: CA/CE
	Motor	Dry motor
	Insulation	2P (3000RPM)
	Frequency	F Class ( 1.5~3HP : B Class )
	Protector	Auto-cut
Material	Frame	SUS304   FC-200
	Main shaft	SUS420J2 ( 1.5~3HP : SUS403 )
	Cable	VCT or H07RN-F or SJOW/SOW

※Pumps can be customized to fit specifications.